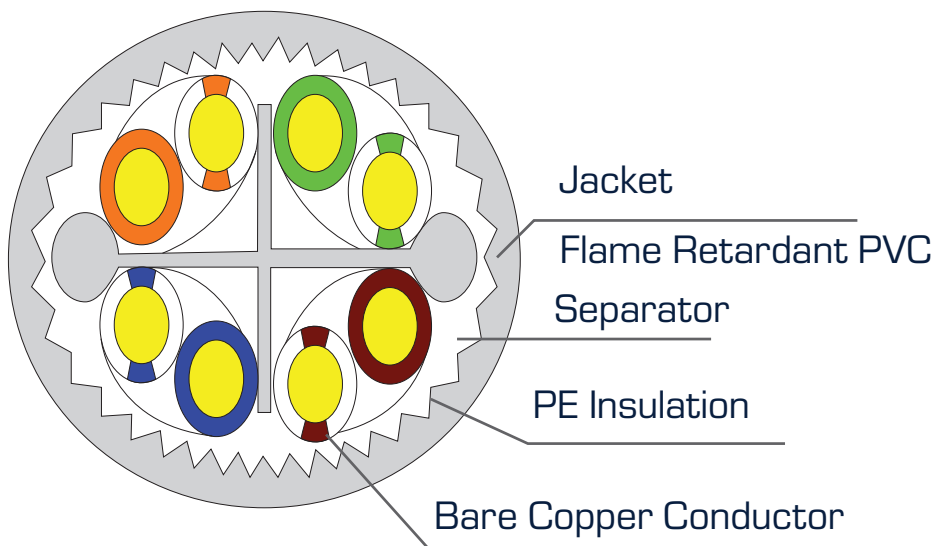
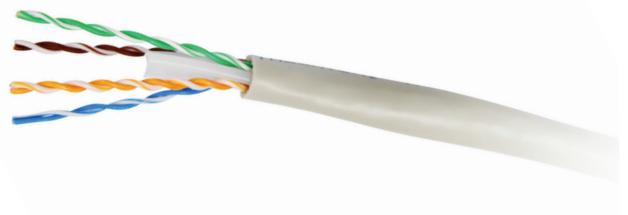


CAT6A UTP UNSHIELDED 10G CABLE ROLL - 500MHZ

C-C6AUTP-SLD

CONFIGURATION:

- Category 6A+ UTP horizontal solid cable, 23 AWGx4P, PVC CM Rated Jacket
- Supplied on reel box
- NVP: 74%



PRODUCT SPECIFICATIONS

MODEL CODE	CONDUCTOR	COLOUR	LENGTH
C-C6AUTP-SLD	Solid	Grey	305M
C-C6AUTP-SLDBLK	Solid	Black	305M



CAT6A UTP UNSHIELDED 10G CABLE ROLL - 500MHZ

C-C6AUTP-SLD

Test Standard	ISO/IEC11801 - TIA-568-C.2 YD/T1019-	
Conductor	Material	Solid-Bare Copper
	Nom.O.D.(mm)	+0.005 - 0.005
Insulation	Material	HDPE
	Diameter	1.02±0.03mm
Sheath	Thickness	0.70±0.05 mm (Avg.)
	External O.D.	7.1±0.4 mm
	Surface	Clean, Frap, Satiation
	Material	FR PVC (CMR rated)
	Color	Multiple
Surface Printing	Letter height	Multiple
	Color	3.0±0.3mm
	Print error & Space	Black
Core Color	1 White- Blue /Blue	2 White-Orange /Orange
	3 White-Green /Green	4 White- Brown /Brown
Packing length	305±1.5m	
Rip-cord	Yes	
Drain wire	No	
Sheath Physical Properties	Before Aging Tensile Strength (Mpa)	≥10.0
	Elongation(%)	≥125
	Aging Period (°C x hrs)	100°C x 24h x 7d
	After Aging Tensile Strength(Mpa)	≥8.0
	Elongation(%)	≥100
	Cold bend(-20±2°Cx4h) 8x Cable O.D. No visible cracks	
Electrical Characteristics (20°C)	1.0-500.0MHz Impedance (Ω)	100±15
	1.0-500.0MHz Delay Shew (ns/100m)	≤45
	DC Resistance (Ω/100m) max	9.38
	DC Conductor Resistance Unbalance (%) max	5.0