

Distribution Box - 3 port

| MODEL CODE | TYPE |
|------------|---------|
| DISB30 | 30 Pair |

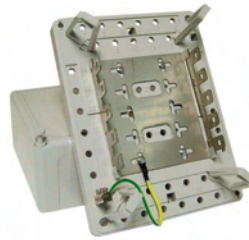
3 port (30 pair) Vacant distribution box.
Size: 150 x 104 x 56mm



Distribution Box - 5 port

| MODEL CODE | TYPE |
|------------|---------|
| DISB50 | 50 Pair |

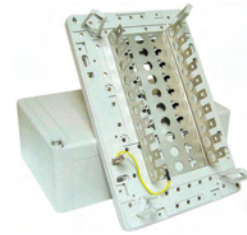
5 port (50 pair) Vacant distribution box. Size:
210 x 160 x 90mm



Distribution Box - 10 port

| MODEL CODE | TYPE |
|------------|----------|
| DISB100 | 100 Pair |

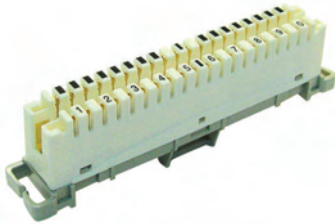
10 port (100 pair) Vacant distribution box.
Size: 320 x 210 x 120mm



10 Pair Connection Module

| MODEL CODE |
|------------|
| DISM10 |

Material PBT, Contact Phosphor Bronze, Plating Silver 1.25um ~5um



Labelling Accessory

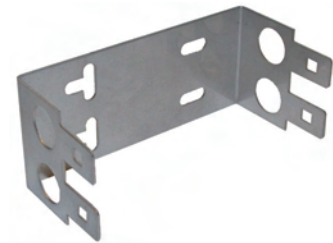
| MODEL CODE |
|------------|
| DISML10 |

Labelling Accessory for DISM10



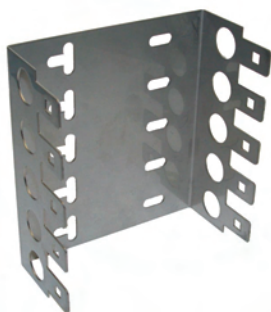
2 Position Backmount Frame

| MODEL CODE | TYPE |
|------------|------------|
| DISBMF2 | 2 position |



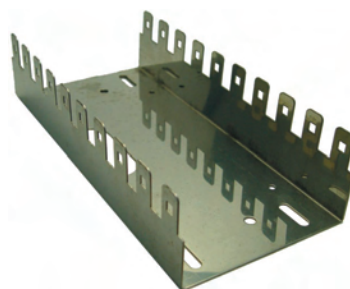
5 Position Backmount Frame

| MODEL CODE | TYPE |
|------------|------------|
| DISBMF5 | 5 position |



10 Position Backmount Frame

| MODEL CODE | TYPE |
|------------|-------------|
| DISBMF10 | 10 position |



17 Position Backmount Frame

| MODEL CODE | TYPE |
|------------|-------------|
| DISBMF17 | 17 position |

