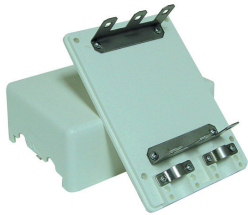


# DISTRIBUTION BOXES

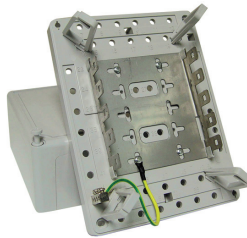
## Distribution Box - 3 Port

MODEL CODE	TYPE
DISB30	30 Pair
3 port (30 pair) Vacant distribution box	
Size: 150 x 104 x 56mm	



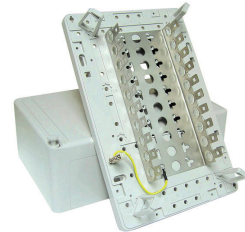
## Distribution Box - 5 Port

MODEL CODE	TYPE
DISB50	50 Pair
5 port (50 pair) Vacant distribution box	
Size: 210 x 160 x 90mm	



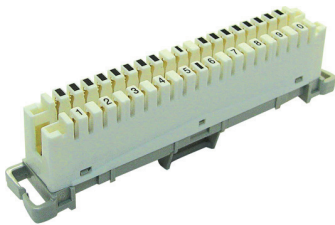
## Distribution Box - 10 Port

MODEL CODE	TYPE
DISB100	100 Pair
10 port (100 pair) Vacant distribution box	
Size: 320 x 210 x 120mm	



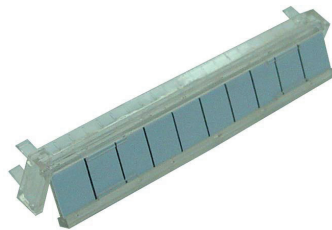
## 10 Pair Connection Module

MODEL CODE	
DISM10	
Material PBT, Contact Phosphor Bronze, Plating Silver 1.25um ~5um	



## Labelling Accessory

MODEL CODE	
DISML10	
Labelling Accessory for DISM10	



## Backmount Frames

MODEL CODE	TYPE
DISBMF2	2 position
DISBMF5	5 position
DISBMF10	10 position



## Easy Wrap - Cable Bundling Solution

MODEL CODE	TYPE ( L x D )
EW-16	2.5M x 16mm
EW-15R	2.5M x 15mm, Retail Pack
EW-1520	20M x 15mm
EW-20	2.5M x 20mm
EW-20R	2.5M x 20mm, Retail Pack
EW-2020	20M x 20mm
EW-2520	25M x 20mm

A unique solution to a messy problem. Easy Wrap zips over a bundle of cables, creating a quick and easy bundling solution. It is much quicker and easier to apply than traditional solutions such as spiral binding and loom tube. Easy Wrap is sold in handy merchandising packets, with an applicator tool in each packet.



### FEATURES

- Suitable for all cable bundling solutions
- Wraps around cables for a secure closure
- Quick and easy to fasten cables securely
- Adjustable and reusable
- Will not pinch or damage cables
- No sharp edges
- Black colour

